

Brake Components For Prevost® Brand Coaches

INFORMATION SHEET

nfi.parts



NEW - NO CORE

CALIPER/ROTOR POSITIONS

LEFT HAND STEER

611349	7700154	SN7 REPLACEMENT CALIPER ONLY
642187	7700982	CALIPER-CARRIER ASSEMBLY (USES FINE THREAD CARRIER BOLT M20X1.5)
61-1185	7700979	CALIPER-CARRIER ASSEMBLY (USES COARSE THREAD CARRIER BOLT M16X1.5)
611300	611300CG	ROTOR-FRONT/TAG AXLE, UNITIZED HAT STYLE
611456	611456CG	ROTOR-FRONT/TAG AXLE

LEFT HAND DRIVE

611348	7700151	SN7 REPLACEMENT CALIPER ONLY
642186	7700983	CALIPER-CARRIER ASSEMBLY (USES FINE THREAD CARRIER BOLT M20X1.5)
61-1184	7700980	CALIPER-CARRIER ASSEMBLY (USES COARSE THREAD CARRIER BOLT M16X1.5)
611457	611457CG	ROTOR MERITOR DRIVE AXLE U-SHAPED
144984	7701196	ROTOR-BRK SPLINED STD LIFESHIELD,PREVOST

LEFT HAND TAG

611349	7700154	SN7 REPLACEMENT CALIPER ONLY
642187	7700982	CALIPER-CARRIER ASSEMBLY (USES FINE THREAD CARRIER BOLT M20X1.5)
61-1185	7700979	CALIPER-CARRIER ASSEMBLY (USES COARSE THREAD CARRIER BOLT M16X1.5)
611300	611300CG	ROTOR-FRONT/TAG AXLE, UNITIZED HAT STYLE
611456	611456CG	ROTOR-FRONT/TAG AXLE

RIGHT HAND STEER

611348	7700151	SN7 REPLACEMENT CALIPER ONLY
642186	7700983	CALIPER-CARRIER ASSEMBLY (USES FINE THREAD CARRIER BOLT M20X1.5)
61-1184	7700980	CALIPER-CARRIER ASSEMBLY (USES COARSE THREAD CARRIER BOLT M16X1.5)
611300	611300CG	ROTOR-FRONT/TAG AXLE, UNITIZED HAT STYLE
611456	611456CG	ROTOR-FRONT/TAG AXLE

RIGHT HAND DRIVE

611349	7700154	SN7 REPLACEMENT CALIPER ONLY
642187	7700982	CALIPER-CARRIER ASSEMBLY (USES FINE THREAD CARRIER BOLT M20X1.5)
61-1185	7700979	CALIPER-CARRIER ASSEMBLY (USES COARSE THREAD CARRIER BOLT M16X1.5)
611457	611457CG	ROTOR MERITOR DRIVE AXLE U-SHAPED
144984	77001196	ROTOR-BRK SPLINED STD LIFESHIELD,PREVOST

RIGHT HAND TAG

611348	7700151	SN7 REPLACEMENT CALIPER ONLY
642186	7700983	CALIPER-CARRIER ASSEMBLY (USES FINE THREAD CARRIER BOLT M20X1.5)
61-1184	7700980	CALIPER-CARRIER ASSEMBLY (USES COARSE THREAD CARRIER BOLT M16X1.5)
611300	611300CG	ROTOR-FRONT/TAG AXLE, UNITIZED HAT STYLE
611456	611456CG	ROTOR-FRONT/TAG AXLE

BRAKE PADS (ALL POSITIONS)

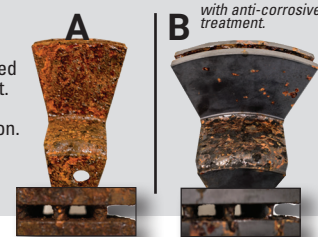
611049, 610072, 611102, 611105, 642188	7700398	PADS-BRAKE, SN7, SVP
--	---------	----------------------

ALL ROTORS ARE LIFESHIELD TREATED

LifeShield Rotor Treatment

Two sample rotor slices tested side by side in the same corrosion test chamber. Test duration simulated 2 years of field operation in a corrosive environment.

Both of these samples were made from the same iron. Sample "A" is standard cast material, and Sample "B" is standard cast material with the addition of anti-corrosive treatment.



Information on this sheet is subject to change at the discretion of NFI Parts and/or its affiliates. Actual product may differ from photo. Contact your NFI Parts solutions manager or customer service representative for further details. All product claims, names, trademarks, and registered trademarks are property of their respective owners. NFI Parts disclaims any proprietary interest in the marks and names of others.

nfi.parts
www.nfi.parts



U.S. & Canada
800.665.2637



U.S. 800.323.1290
Canada 800.665.0155
partsstore.nfi.parts